

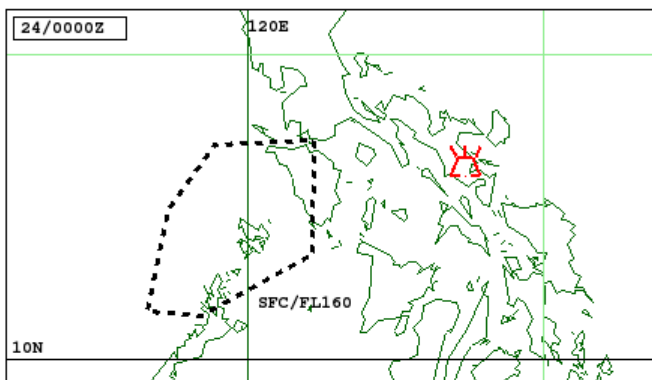
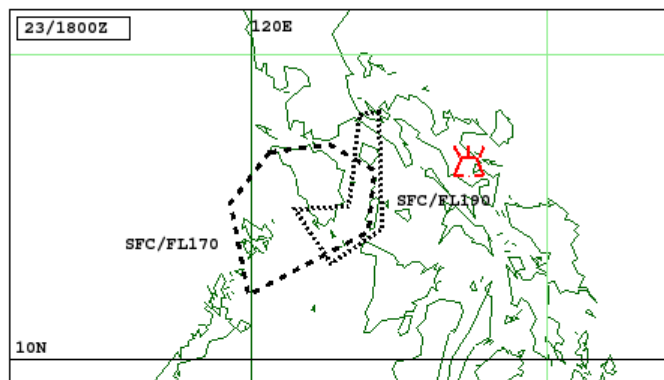
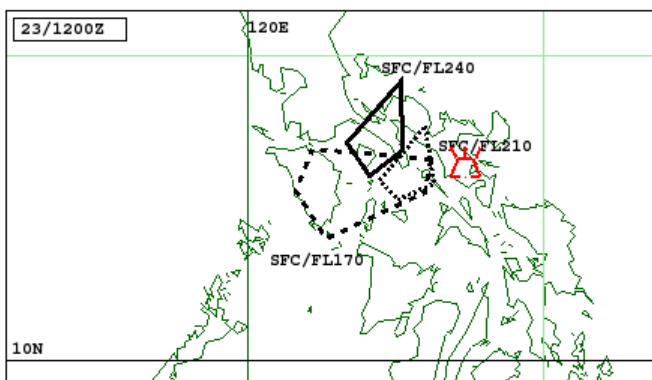
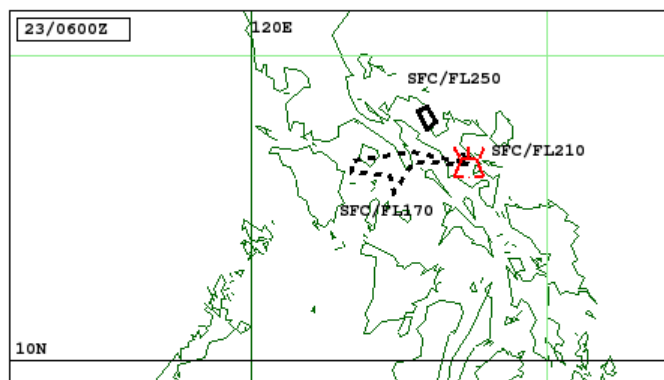
Dear Valued Guests,

Greetings from Air SWIFT!

It is with regret that we advise that the recent volcanic eruptions of Mayon Volcano in the Bicol region has emitted a significant ash cloud which prevailing winds are blowing toward the Visayas and Northern Palawan areas. Latest available forecasts indicate that this cloud of ash will be over the El Nido area by early tomorrow morning. In light of this unfortunate but unavoidable event, we have no choice but to prioritize safety in our operations and as a result we are cancelling the following flights scheduled for January 24, 2018:

T6-110	Manila-El Nido	0630H/0745H
T6-111	El Nido-Manila	0800H/0915H
T6-114	Manila-El Nido	0700H/0815H
T6-215	El Nido-Clark	0855H/1015H
T6-216	Clark-El Nido	1135H/1255H
T6-410	El Nido-Caticlan	1325H/1430H
T6-411	Caticlan-El Nido	1500H/1605H

Generated as of 0647H January 23, 2018



VA ADVISORY  
DTG: 20180123/0647Z  
VAAC: TOKYO  
VOLCANO: MAYON 273030  
AREA: PHILIPPINES  
SUMMIT ELEV: 2462M  
ADVISORY NR: 2018/22  
INFO SOURCE: HIMAWARI-8 PHIVOLCS  
AVIATION COLOUR CODE: NIL

ERUPTION DETAILS: ERUPTION AT 20180123/0533Z FL180 EXTD W  
REPORTED  
RMK: SOME PART OF VA(FL250) (FL210) (FL170) OBSCURED BY MET  
CLOUD. NEW VA OBS SATELLITE IMAGERY.  
NXT ADVISORY: 20180123/1200Z



**AirSWIFT Transport, Inc.**

**[www.air-swift.com](http://www.air-swift.com)**

---

We are continuously monitoring the situation to ensure the safety of all our passengers.

Those booked on these flights may take the following options:

1. Rebook on the next available flight subject to seat availability.
2. Rebook within 6 months without penalties.
3. Full refund of the airfare.

We sincerely apologize for this inconvenience but we hope you understand that safety is our paramount concern.

For inquiries and concerns you may reach us at the following numbers from 0830H-1730H

+63915 5097024

+63917 7890169

(02) 318 5941

(02) 318 5942

(02) 318 5943

(02) 902 5948

(02) 902 5949

Thank you!

**By: AirSWIFT Management**